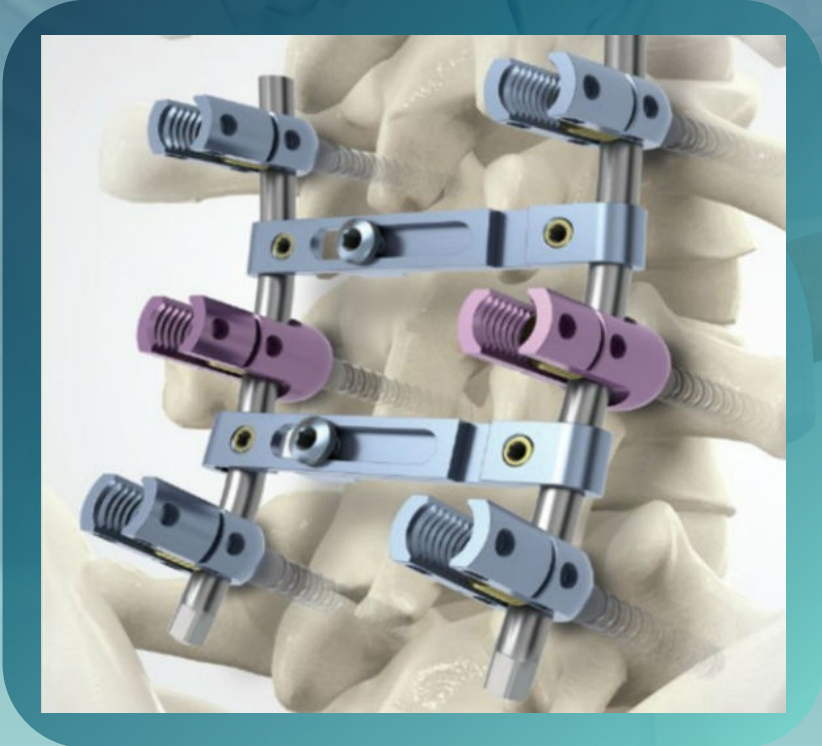


SPINE

PRODUCT BROCHURE



PERFECT
— MEDICARE —



We have great pleasure to present the entire range of spine implants and instruments manufactured by us in this edition of own page for the convenience and reference of our esteemed patrons.

Having hudge the knowledge of manufacturing spine implants and instruments last 11 eleven years over the years the company grew rapidly and gained enormous experience, shall in craftsmanship, design capabilities and the ability to provide all kinds of spinal implants for the ever embracing needs and techniques of surgical specialities. This reputation has made it possible for us to energy as one of the major fore-runners in the surgical implants industries.

State of art technology with the latest infrastructure and experience. has facilitated us to manufacture dependable quality instruments and implants. We have achieved quality as a result of controlled and continuos monitoring of each and every stage of our manufacturing process. We are proud of our Involvement in research and design and development to pursue better result in manufacturing techniques precision and quality control efficiency in process and customer satisfaction.

We run the company as per quality management system for medical devices and have already received certification for EN ISO 13485-2016, ISO 9001:2015, WHO GMP & CE all our instruments and implants are CE certified. We have FDA (CDSCEO) licensed manufacturer of orthopedic implants issued by the directorate of drug control, Govt. of India on the whole we are dedicated to improvement, growth and above all service oriented expertise in the form of surgical instruments & implants to the healthcare professionals.

Most important note about our company :

This is technocrat company because we have so much technical experience staff.

(DME Engineer)

MR. MAHENDRABHAI SONI has **40 years of technical experience** with his guidance his son **Mr. Aakash Soni** run this company. He is also 18 years of technical experience with DME engineering. Qualification and his brother and sister in the this company and brother Devang is EC engineers and Sister Hetal is M.Sc. Chemistry Qualified in short all member of this company is technical sound and with qualification and experience person who dedicated with his work.

So anyone can trust this company because this people are technical person and technocrat mind to develop and Implants and Instruments.

General Information

All M/s. **Perfect Medicare Product** known his own brand. We have launch our products as **PERFECT** (A Technocraft Company) Brand **PERFECT** is registered marketing brand name to in incorporated in clause of general information or client information or public information. We have as name **M/s. PERFECT Medicare Product** so as all know about that our brand name for Mfg. orthopaedic Implants and Instruments.

Guarantee

All PERFECT implants are unconditionally guaranteed for a period of one year against any defect in workmanship and material only when used normally for its intended surgical purpose. Any implants witch is found to be so defective would be replaced or repair by PERFECT free of charge. Defects are Subject to acceptance be PERFECT for free repair on replacement.

CERTIFICATION

GOVERNMENT OF INDIA
MINISTRY OF COMMERCE AND INDUSTRY
O/o Additional Director General of Foreign Trade
Wing: Foreign Trade, Government of India
A Block, 11th Floor, Govt. Ahmedabad-380001
www.mca.gov.in
CERTIFICATE OF IMPORTER/EXPORTER CODE (IEC)
(This is a computer generated certificate. The authenticity of this document may be verified by clicking on the IEC No. link on the web site of DGFT in: <http://regdft.gov.in>)

1. User Name: PERFECT MEDICARE PRODUCTS
2. Address: 27 MAHADEV ESTATE PART 4 A B H RAMOL POLICE STATION CTM AHMEDABAD GUJARAT-382449
3. Name and Designation of the signatory: PERFECT MEDICARE PRODUCTS Proprietorship
4. Branches: Nil
5. IEC Number: AXHPS83000
6. Date of Issue: 26.11.2019
7. PAN: AXHPS83000

Place: AHMEDABAD
Date: 26.11.2019
System generated IEC certificate

FORM 28
(New Rule 7a)
Licence to manufacture/wholesale (or for distribution) of drugs specified in Schedule C, C(I) including those specified in schedule X

Number of licence and date of issue: **G/28/1645 Dated -15/11/2017**

1. **MR. SONI MAHENDRABAI MANGAL PROPRIETOR OF MS. PERFECT MEDICARE PRODUCTS** is hereby granted licence to manufacture at the premises situated at the **Plot No. 26, 27, 28, MAHADEV ESTATE, PART-4A, B/H RAMOL POLICE STATION, AHMEDABAD-380 026.**

the following drugs being drug specified in schedules C & C(I) Excluding those specified in sub. X to the Drugs and Cosmetics Rules 1954.

2. Name of approved competent technical staff: **As Per List Approved & Annexed**

3. The licence authorizes the sale by way of wholesale dealing by the licensee and storage for sale by the licensee of the drugs manufactured under the licence, subject to the conditions applicable to licensee for sale.

4. The licence will be in force **15/11/2017 To 14/11/2022**

5. The licence is subject to the conditions stated below and to such other conditions as may be specified in the rules and regulations being in force under the Drugs and Cosmetics Act, 1954.

Date: **18/11/2017**

Central Licensing Approving Authority

Conditions of Licence

1. This licence and any certificate of approval of sales shall be in force from the date of issue and shall be produced at the request of an Inspector appointed under the Drugs and Cosmetics Act, 1954.

2. The licensee shall comply with the provisions of the Drugs and Cosmetics Act, 1954 and the rules and regulations made thereunder in relation to the manufacture of the drugs specified in the licence and the storage of the drugs.

3. The licensee shall not be allowed to sell or supply the drugs specified in the licence to any person other than the person named in the licence.

4. The licensee shall not be allowed to sell or supply the drugs specified in the licence to any person other than the person named in the licence.

5. The licensee shall not be allowed to sell or supply the drugs specified in the licence to any person other than the person named in the licence.

Central Drugs Standard Control Organisation
Directorate General of Health Services
Ministry of Health & Family Welfare
(Medical Device & Diagnostic Division)

File No.: **AXHPS8300006**

1. Perfect Medicare Products,
26,27,28,Mahadev Estate Part-4A,behind Ramol Police Station,ctm,ahmedabad Ahmedabad - Gujarat (India) - 380026
Telephone No.: 07929701187 FAX: 07929701187 Email: asakshoni1984@gmail.com

2. Licence to manufacture for Sale or for Distribution of Class C or Class D medical devices in Sr. Form MD-9 under Medical Device Rules, 2017, regarding.

Manufacturing licence No. G/28/1645 in Form MD-9 is hereby forwarded to you.

The licence is subject to following conditions:

1. Licence holder shall inform the Central Licensing Authority of the occurrence of any suspected unexpected serious adverse event and action taken thereon including any recall within fifteen days of such event coming to the notice of licence holder.
2. The licence holder shall obtain prior approval from the Central Licensing Authority, before any major change as specified in the Sixth Schedule is carried out and the Central Licensing Authority shall indicate its approval or rejection within forty five days and in case where no communication is received within the stipulated time from such Authority, such change shall be deemed to have been approved.
3. The licence holder shall obtain prior approval from the Central Licensing Authority, before any minor change as specified in the Sixth Schedule to the Central Licensing Authority within a period of thirty days after such minor change takes place.
4. The licence holder shall carry out test of each batch of product manufactured prior to its release for compliance with specifications either in his own laboratory or in any other laboratory registered under sub-rule (3) of rule 83.

6. The licence holder shall, on being informed by the Central Licensing Authority that any part of any lot of the medical device has been found not conforming to the provisions specified under the Act and these rules, and on being directed so to do by such licensing authority, withdraw the remainder of that lot from sale and, so far as may be, in the particular circumstances of the case, be practicable, recall the issues already made from that lot.
7. The licence holder shall maintain an audit or inspection book in Form MD-11 to enable the Notified Body or Medical Device Officer to record the observations and non-conformity, if any.
8. The licence holder shall maintain at least one unit of sample from each batch of invasive medical device and in vitro diagnostic medical device manufactured for reference purpose for a period of one hundred and eighty days after the date of expiry of such batch.
9. The licence holder shall maintain records of manufacturing and sales which shall be open to inspection by a Medical Device Officer.
10. The medical device, when offered for sale, shall be accompanied by either its package insert or user manual, whichever applicable.
11. The manufacturing or testing activity of medical device shall be undertaken only under the direction and supervision of the competent technical staff.
12. If the manufacturer has stopped manufacturing activity or closed the manufacturing site for a period of thirty days or more, the same shall be intimated to the Central Licensing Authority.

Yours faithfully
Licensing Authority
Seal/Stamp

CERTIFICATE OF REGISTRATION

The Governing Board of Progressive International Certifications Limited hereby grant to:

PERFECT MEDICARE PRODUCTS
Address to which this Certificate refers:
26, 27, 28, MAHADEV ESTATE PART - 4, B/H, RAMOL POLICE STATION, CTM, RAMOL ROAD, AHMEDABAD - 382449, GUJARAT, INDIA.

MEDICAL DEVICE QUALITY MANAGEMENT SYSTEM ISO 13485:2016

Approved Scope to which this Certificate refers:
MANUFACTURE, SUPPLY AND EXPORT OF ORTHOPEDIC IMPLANTS SUCH AS INTERLOCKING NAILS, INTERLOCKING BOLTS, LOCKING PLATES, LOCKING SCREWS, BONE PLATES, BONE SCREWS, SPINAL IMPLANTS, ARTHROSCOPY IMPLANTS, PINS & WIRES, HIP IMPLANTS, JOINT IMPLANTS AND INSTRUMENTS, ORAL - PLASTIC - MAXILLOFACIAL IMPLANTS AND SURGICAL INSTRUMENTS.

Registration No.: PQCI/QMS/0819/004
Certificate Issue Date: 14.08.2019
1st Surveillance: 08.2020
2nd Surveillance: 08.2021
Certificate Expire Date: 13.08.2022

Head of Certificate

CERTIFICATE OF REGISTRATION

The Governing Board of Progressive International Certifications Limited hereby grant to:

PERFECT MEDICARE PRODUCTS
Address to which this Certificate refers:
26, 27, 28, MAHADEV ESTATE PART - 4, B/H, RAMOL POLICE STATION, CTM, RAMOL ROAD, AHMEDABAD - 382449, GUJARAT, INDIA.

QUALITY MANAGEMENT SYSTEM ISO 9001:2015

Approved Scope to which this Certificate refers:
MANUFACTURE, SUPPLY AND EXPORT OF ORTHOPEDIC IMPLANTS SUCH AS INTERLOCKING NAILS, INTERLOCKING BOLTS, LOCKING PLATES, LOCKING SCREWS, BONE PLATES, BONE SCREWS, SPINAL IMPLANTS, ARTHROSCOPY IMPLANTS, PINS & WIRES, HIP IMPLANTS, JOINT IMPLANTS AND INSTRUMENTS, ORAL - PLASTIC - MAXILLOFACIAL IMPLANTS AND SURGICAL INSTRUMENTS.

Registration No.: PQCI/QMS/0819/104
Certificate Issue Date: 14.08.2019
1st Surveillance: 08.2020
2nd Surveillance: 08.2021
Certificate Expire Date: 13.08.2022

Head of Certificate

CERTIFICATE OF REGISTRATION

The Governing Board of Progressive International Certifications Limited hereby grant to:

PERFECT MEDICARE PRODUCTS
Address to which this Certificate refers:
26, 27, 28, MAHADEV ESTATE PART - 4, B/H, RAMOL POLICE STATION, CTM, RAMOL ROAD, AHMEDABAD - 382449, GUJARAT, INDIA.

WHO-GMP

Approved Scope to which this Certificate refers:
MANUFACTURE, SUPPLY AND EXPORT OF ORTHOPEDIC IMPLANTS SUCH AS INTERLOCKING NAILS, INTERLOCKING BOLTS, LOCKING PLATES, LOCKING SCREWS, BONE PLATES, BONE SCREWS, SPINAL IMPLANTS, ARTHROSCOPY IMPLANTS, PINS & WIRES, HIP IMPLANTS, JOINT IMPLANTS AND INSTRUMENTS, ORAL - PLASTIC - MAXILLOFACIAL IMPLANTS AND SURGICAL INSTRUMENTS.

Registration No.: PQCI/GMP/0819/024
Certificate Issue Date: 14.08.2019
1st Surveillance: 08.2020
2nd Surveillance: 08.2021
Certificate Expire Date: 13.08.2022

Head of Certificate

Certificate of Registration

ANNEXURE: I
List of Products

SR. No	PRODUCT NAME
1	INTERLOCKING NAILS
2	INTERLOCKING BOLTS
3	LOCKING PLATES
4	LOCKING SCREWS
5	BONE PLATES
6	BONE SCREWS
7	SPINAL IMPLANTS
8	ARTHROSCOPY IMPLANTS
9	PINS & WIRES
10	HIP IMPLANTS
11	JOINT IMPLANTS
12	JOINT INSTRUMENTS
13	ORAL - PLASTIC - MAXILLOFACIAL IMPLANTS
14	SURGICAL INSTRUMENTS

SAC Code: 856000
MEDICAL DEVICE DIRECTIVE: ISO:9001
Certificate No.: PQCI/QR/0819/004
Certificate Issue Date: 14.08.2019
1st Surveillance: 08.2020

Page 2 of 2
Certificate Expire Date: 13.08.2022
2nd Surveillance: 08.2021

Head of Certificate

Certificate of Registration

CERTIFICATE OF COMPLIANCE

This is to certify that

PERFECT MEDICARE PRODUCTS
26, 27, 28, MAHADEV ESTATE, PART - 4, B/H, RAMOL POLICE STATION, CTM - RAMOL ROAD, AHMEDABAD - 382449, GUJARAT, INDIA.

Has been granted the certificate number: PQCI/CE/0819/006
Product Requirement of this firm has been assessed in accordance with Directive applicable to following Product(s):

CE

MANUFACTURE, SUPPLY AND EXPORT OF ORTHOPEDIC IMPLANTS SUCH AS INTERLOCKING NAILS, INTERLOCKING BOLTS, LOCKING PLATES, LOCKING SCREWS, BONE PLATES, BONE SCREWS, SPINAL IMPLANTS, ARTHROSCOPY IMPLANTS, PINS & WIRES, HIP IMPLANTS, JOINT IMPLANTS AND INSTRUMENTS, ORAL - PLASTIC - MAXILLOFACIAL IMPLANTS AND SURGICAL INSTRUMENTS.

Product List as per Annexure 1:
EAC Code: 856000
MEDICAL DEVICE DIRECTIVE: ISO:9001

Page 1 of 2
Certificate Issue Date: 14.08.2019
1st Surveillance: 08.2020

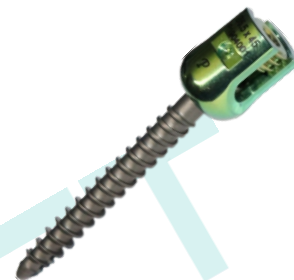
Head of Certificate

REGULAR SPINAL SCREW



REGULAR MONOAXIAL SCREW

MONOAXIAL SCREW DETAILS				
Material	Diameter (Ø)			
Titanium	Ø 4.5 mm	Ø 5.5 mm	Ø 6.5 mm	Ø 7.5 mm
Length (mm)	25 mm	30mm	30mm	30mm
	30mm	35mm	35mm	35mm
	35mm	40mm	40mm	40mm
	40mm	45mm	45mm	45mm
	45mm	50mm	50mm	50mm
		55mm	55mm	55mm
			60mm	60mm



REGULAR POLYAXIAL SCREW

POLYAXIAL SCREW DETAIL				
Material	Diameter (Ø)			
Titanium	Ø 4.5 mm	Ø 5.5 mm	Ø 6.5 mm	Ø 7.5 mm
Length (mm)	25 mm	30mm	30mm	30mm
	30mm	35mm	35mm	35mm
	35mm	40mm	40mm	40mm
	40mm	45mm	45mm	45mm
	45mm	50mm	50mm	50mm
		55mm	55mm	55mm
			60mm	60mm



REGULAR REDUCTION MONOAXIAL SCREW

MONOAXIAL SCREW DETAILS			
Material	Diameter (Ø)		
Titanium	Ø 4.5 mm	Ø 5.5 mm	Ø 6.5 mm
Length (mm)	25 mm	30mm	30mm
	30mm	35mm	35mm
	35mm	40mm	40mm
	40mm	45mm	45mm
	45mm	50mm	50mm
		55mm	55mm
			60mm



REGULAR REDUCTION POLYAXIAL SCREW

REDUCTION POLYAXIAL SCREW DETAILS			
Material	Diameter (Ø)		
Titanium	Ø 4.5 mm	Ø 5.5 mm	Ø 6.5 mm
Length (mm)	25 mm	30mm	30mm
	30mm	35mm	35mm
	35mm	40mm	40mm
		45mm	45mm
		50mm	50mm

PREMIUM SPINAL SCREW



PREMIUM MONOAXIAL SCREW

MONOAXIAL SCREW DETAILS

Material	Diameter (Ø)			
Titanium	Ø 4.5 mm	Ø 5.5 mm	Ø 6.5 mm	Ø 7.5 mm
Length (mm)	25 mm	30mm	30mm	30mm
	30mm	35mm	35mm	35mm
	35mm	40mm	40mm	40mm
	40mm	45mm	45mm	45mm
	45mm	50mm	50mm	50mm
		55mm	55mm	55mm
		60mm	60mm	

PREMIUM POLYAXIAL SCREW

POLYAXIAL SCREW DETAILS

Material	Diameter (Ø)			
Titanium	Ø 4.5 mm	Ø 5.5 mm	Ø 6.5 mm	Ø 7.5 mm
Length (mm)	25 mm	30mm	30mm	30mm
	30mm	35mm	35mm	35mm
	35mm	40mm	40mm	40mm
	40mm	45mm	45mm	45mm
	45mm	50mm	50mm	50mm
		55mm	55mm	55mm
		60mm	60mm	



PREMIUM REDUCTION POLYAXIAL SCREW

REDUCTION POLYAXIAL SCREW DETAILS

Material	Diameter (Ø)		
Titanium	Ø 4.5 mm	Ø 5.5 mm	Ø 6.5 mm
Length (mm)	25 mm	30mm	30mm
	30mm	35mm	35mm
	35mm	40mm	40mm
	40mm	45mm	45mm
	45mm	50mm	50mm



MONOAXIAL SCREW

MONOAXIAL SCREW DETAIL

Material	Diameter (Ø)			
Titanium	Ø 4.5 mm	Ø 5.5 mm	Ø 6.5 mm	Ø 7.5 mm
Length (mm)	25 mm	30mm	30mm	30mm
	30mm	35mm	35mm	35mm
	35mm	40mm	40mm	40mm
	40mm	45mm	45mm	45mm
	45mm	50mm	50mm	50mm
		55mm	55mm	55mm
			60mm	60mm

DUAL THREAD SPINAL SYSTEM



POLYAXIAL SCREW

POLYAXIAL SCREW DETAIL

Material	Diameter (Ø)			
Titanium	Ø 4.5 mm	Ø 5.5 mm	Ø 6.5 mm	Ø 7.5 mm
Length (mm)	25 mm	30mm	30mm	30mm
	30mm	35mm	35mm	35mm
	35mm	40mm	40mm	40mm
	40mm	45mm	45mm	45mm
	45mm	50mm	50mm	50mm
		55mm	55mm	55mm
			60mm	60mm

REDUCTION MONOAXIAL SCREW DETAILS

Material	Diameter (Ø)		
Titanium	Ø 4.5 mm	Ø 5.5 mm	Ø 6.5 mm
Length (mm)	25 mm	30 mm	30 mm
	30 mm	35 mm	35 mm
	35 mm	40 mm	40 mm
		45 mm	45 mm
		50 mm	50 mm

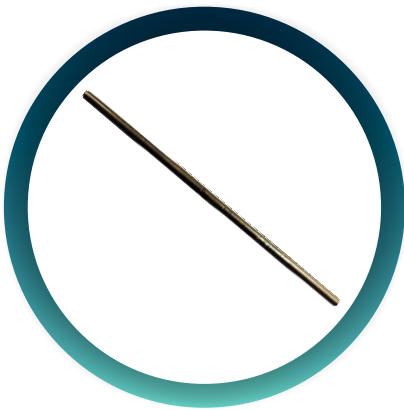


REDUCTION POLYAXIAL SCREW DETAILS

Material	Diameter (Ø)		
Titanium	Ø 4.5 mm	Ø 5.5 mm	Ø 6.5 mm
Length (mm)	25 mm	30 mm	30 mm
	30 mm	35 mm	35 mm
	35 mm	40 mm	40 mm
		45 mm	45 mm
		50 mm	50 mm

RODS & CONNECTOR

Ø 3.0 MM SPINAL CONNECTOR ROD X 200 MM LONG (PAIR)



Ø 5.5 MM SPINAL TRANSVERSE CONNECTOR (PAIR) WITH ROD



REGULAR 5.5 MM SPINAL ROD

SPINAL ROD DETAILS			
Material	Diameter (Ø)		
Titanium	Ø 5.5 mm	Ø 5.5 mm	Ø 5.5 mm
	40 mm	100 mm	250 mm
Length (mm)	50 mm	120 mm	300 mm
	60 mm	140 mm	350 mm
	70 mm	160 mm	400 mm
	80 mm	180 mm	500 mm
	90 mm	200 mm	

LATERAL / ELIA CONNECTOR

LATERAL / ELIA CONNECTOR DETAILS		
Material	Diameter (Ø)	
Titanium	Ø 5.5 mm	Ø 5.5 mm
Length (mm)	15 mm	25 mm
	20 mm	30 mm



Ø 5.5 MM SPINAL CROSSLINK CONNECTOR



- Small
- Medium
- Large

DOMINO CONNECTOR



LUMBER CAGES



PLIF CAGE (BULLET CAGE)

PLIF CAGE DETAILS (BULLET CAGE)

Material	Degree									
Titanium Peek	4° TLIF CAGE									
Length (mm)	7x22mm	8x22mm	9x22mm	10x22mm	11x22mm	12x22mm	13x22mm	14x22mm	15x22mm	
	7x26mm	8x26mm	9x26mm	10x26mm	11x26mm	12x26mm	13x26mm	14x26mm	15x26mm	

TLIF CAGE (BANANA CAGE)

TLIF CAGE DETAILS (BANANA CAGE)

Material	Degree									
Titanium Peek	0° TLIF CAGE									
Length (mm)	7x25mm	8x25mm	9x25mm	10x25mm	11x25mm	12x25mm	13x25mm	14x25mm	15x25mm	
	7x30mm	8x30mm	9x30mm	10x30mm	11x30mm	12x30mm	13x30mm	14x30mm	15x30mm	



CERVICAL CAGES



CERVICAL DEO CAGE

Material	Diameter (Ø)		
Titanium Peek	Ø 12 mm	Ø 14 mm	Ø 16 mm
	5mm	5mm	5mm
Length (mm)	6mm	6mm	6mm
	7mm	7mm	7mm
	8mm	8mm	8mm
	9mm	9mm	9mm
	10mm	10mm	10mm



CERVICAL CAGE WITH SCREW

CERVICAL CAGE WITH SCREW DETAILS

Material	Length (mm)	
Titanium	14 mm	16 mm
	5 mm	5 mm
Thickness (mm)	6 mm	6 mm
	7 mm	7 mm
	8 mm	8 mm
	9 mm	9 mm
	10 mm	10 mm

CERVICAL C1-C2 CAGE



CERVICAL CAGE PLATE WITH SCREW

CERVICAL CAGE PLATE WITH SCREW DETAIL

Material	Length (mm)	
Titanium	14 mm	16 mm
Thickness (mm)	5 mm	5 mm
	6 mm	6 mm
	7 mm	7 mm
	8 mm	8 mm
	9 mm	9 mm
	10 mm	10 mm

CAGES



EXPANDABLE CAGE

EXPANDABLE CAGE DETAILS

Material	Diameter (Ø)			
Titanium	Ø 10 mm	Ø 12 mm	Ø 14 mm	Ø 16 mm
Length (mm)	20 X 25	20 X 25	20 X 25	20 X 25
	25 X 35	25 X 35	25 X 35	25 X 35
	35 X 50	35 X 50	35 X 50	35 X 50
	50 X 75	50 X 75	50 X 75	50 X 75



EXPANDABLE JACK CAGE WITH PLATE

EXPANDABLE JACK CAGE WITH PLATES DETAILS

Material	Diameter (Ø)			
Titanium	Ø 12 mm	Ø 14 mm	Ø 16 mm	Ø 18 mm
Length (mm)	20 X 25	20 X 25	20 X 25	20 X 25
	25 X 35	25 X 35	25 X 35	25 X 35
	35 X 50	35 X 50	35 X 50	35 X 50
	50 X 75	50 X 75	50 X 75	50 X 75



MESH CAGE DIAMOND CUT

MESH CAGE DIAMOND CUT DETAILS

Material	Diameter (Ø)				
Titanium	Ø 10 mm	Ø 12 mm	Ø 14 mm	Ø 16 mm	Ø 18 mm
Length (mm)	100 MM	100 MM	100 MM	100 MM	100 MM



EXPANDABLE JACK CAGE

EXPANDABLE CAGE WITHOUT PLATES DETAILS

Material	Diameter (Ø)			
Titanium	Ø 12 mm	Ø 14 mm	Ø 16 mm	Ø 18 mm
Length (mm)	20 X 25	20 X 25	20 X 25	20 X 25
	25 X 35	25 X 35	25 X 35	25 X 35
	35 X 50	35 X 50	35 X 50	35 X 50
	50 X 75	50 X 75	50 X 75	50 X 75



EXPANDABLE CAGE BONE SCREW SELF DRILLING & TAPPING

EXPANDABLE CAGE BONE SCREW SELF DRILLING & TAPPING DETAILS

Material	Diameter (Ø)			
Titanium	Ø 4.0 mm	Ø 4.0 mm	Ø 4.0 mm	Ø 4.3 mm
Length (mm)	10 mm	14 mm	18 mm	10 mm
	12 mm	16 mm	20 mm	12 mm
				14 mm
				16 mm
			18 mm	



ECO MESH CAGE ROUND CUT

ECO MESH CAGE ROUND CUT DETAILS

Material	Diameter (Ø)				
Titanium	Ø 10 mm	Ø 12 mm	Ø 14 mm	Ø 16 mm	Ø 18 mm
Length (mm)	100 MM	100 MM	100 MM	100 MM	100 MM

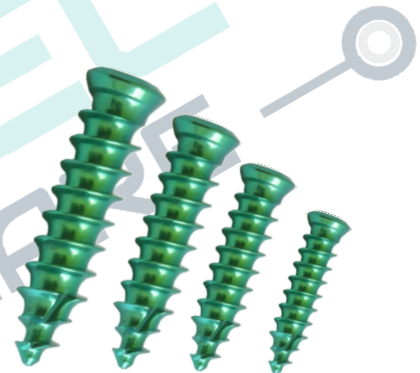
ANTERIOR CERVICAL FIXATION SYSTEM



ANTERIOR CERVICAL PLATE

ANTERIOR CERVICAL PLATE DETAILS

Material			
Titanium	Length (mm)		
	22 mm	37.5 mm	55 mm
	24 mm	40 mm	57.5 mm
	26 mm	42.5 mm	60 mm
	28 mm	45 mm	65 mm
	30 mm	47.5 mm	70 mm
	32.5 mm	50 mm	75 mm
	35 mm	52.5 mm	80 mm



CERVICAL BONE SCREW SELF DRILLING & TAPPING

CERVICAL BONE SCREW SELF DRILLING & TAPPING DETAILS

Material		Diameter (Ø)					
Titanium		Ø 4.0 mm					
Length (mm)	10 mm	12 mm	14 mm	16 mm	18 mm	20 mm	



CERVICAL REVISION BONE SCREW SELF DRILLING & TAPPING

CERVICAL REVISION BONE SCREW SELF DRILLING & TAPPING DETAILS

Material		Diameter (Ø)				
Titanium		Ø 4.3 mm				
Length (mm)	10 mm	12 mm	14 mm	16 mm	18 mm	

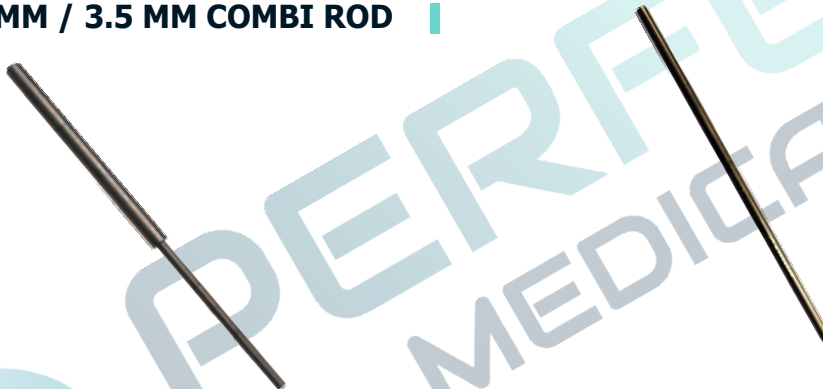
POSTERIOR CERVICAL FIXATION SYSTEM

POSTERIOR CERVICAL POLYAXIAL SCREW (LATERAL MASS)



POSTERIOR CERVICAL POLYAXIAL SCREW DETAIL (LATERAL MASS)				
Material	Diameter (Ø)			
	Titanium	Ø 3.5 mm	Ø 3.5 mm	Ø 4.0 mm
Length (mm)	10 mm	22 mm	10 mm	22 mm
	12 mm	24 mm	12 mm	24 mm
	14 mm	26 mm	14 mm	26 mm
	16 mm	28 mm	16 mm	28 mm
	18 mm	30 mm	18 mm	30 mm
	20 mm	35 mm	20 mm	35 mm

Ø 5.5 MM / 3.5 MM COMBI ROD



CERVICAL ROD FOR LATERAL MASS

CERVICAL ROD FOR LATERAL MASS DETAILS	
Material	Diameter (Ø)
Titanium	Ø 3.5 mm
Length (mm)	200 mm

(As per Customer Requirement)

CERVICAL LATERAL CONNECTOR



CERVICAL LATERAL CONNECTOR DETAILS			
Material	Diameter (Ø)		
Titanium	Ø 3.5 mm		
Length (mm)	15 mm	20 mm	25 mm

CERVICAL C1-C2 CAGE



BONE SCREW



BONE SCREW DETAILS				
Material	Diameter (Ø)			
Titanium	Ø 4.5 mm			
Length (mm)	8 mm	10 mm	12 mm	14 mm

OCCIPITAL PLATE



- Small
- Medium
- Large



CANNULATED POLY AXIAL SCREW (MIS USE)

CANNULATED POLY AXIAL SCREW DETAIL

	Diameter (Ø)			
	Ø 4.5 mm	Ø 5.5 mm	Ø 6.5 mm	Ø 7.5 mm
Material	Titanium			
Length (mm)	25 mm	30mm	30mm	30mm
	30mm	35mm	35mm	35mm
	35mm	40mm	40mm	40mm
	40mm	45mm	45mm	45mm
	45mm	50mm	50mm	50mm
		55mm	55mm	55mm
		60mm	60mm	



FENESTRATED POLY AXIAL SCREW

FENESTRATED POLY AXIAL SCREW DETAIL

	Diameter (Ø)			
	Ø 4.5 mm	Ø 5.5 mm	Ø 6.5 mm	Ø 7.5 mm
Material	Titanium			
Length (mm)	25 mm	30mm	30mm	30mm
	30mm	35mm	35mm	35mm
	35mm	40mm	40mm	40mm
	40mm	45mm	45mm	45mm
	45mm	50mm	50mm	50mm
		55mm	55mm	55mm
		60mm	60mm	

FENESTRATED SCREW CEMENTING NEEDLE



PEDICAL HOOK



PEDICAL HOOK



LAMINAR HOOK



NERO REDUCE LAMINAR HOOK



ANGLE BLADE HOOK



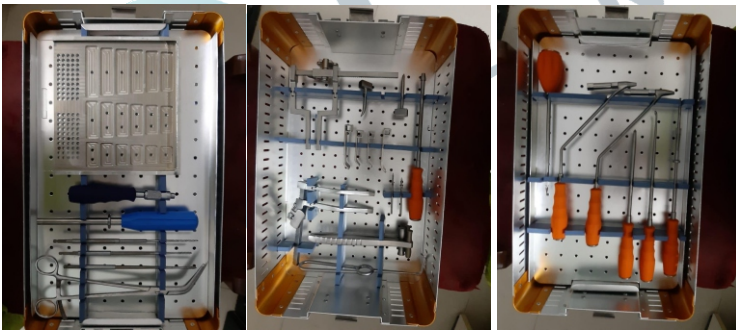
NERO LAMINAR HOOK

SPINAL INSTRUMENTS

LUMBER SPINE INSTRUMENT SET



ANTERIOR CERVICAL PLATE INSTRUMENT SET



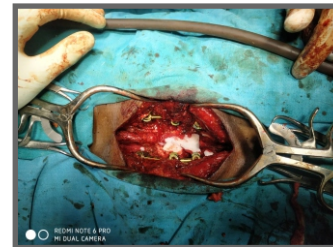
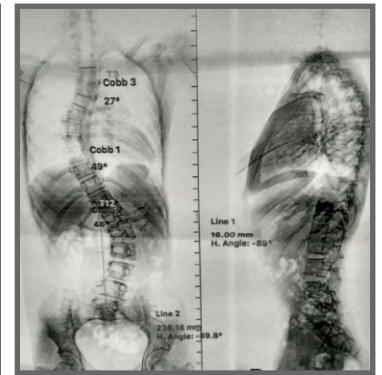
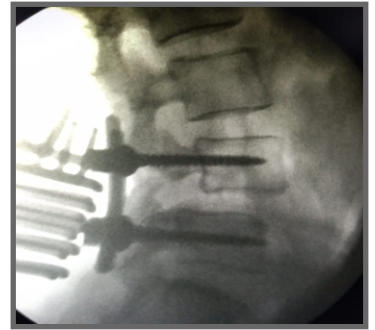
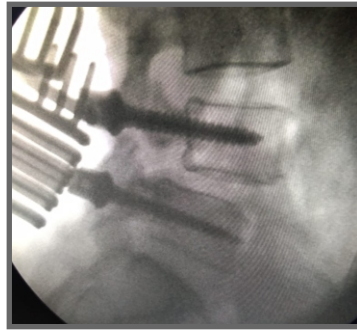
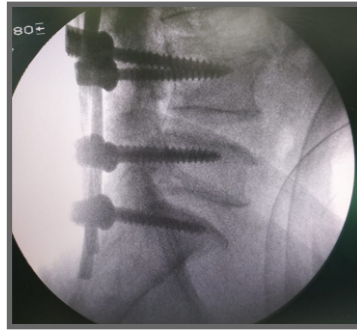
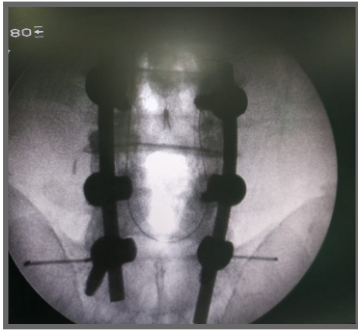
POSTIRIOR CERVICAL SCREW INSTRUMENT SET



TLIF & PLIF CAGE INSTRUMENT SET



SURGERY & X-RAY

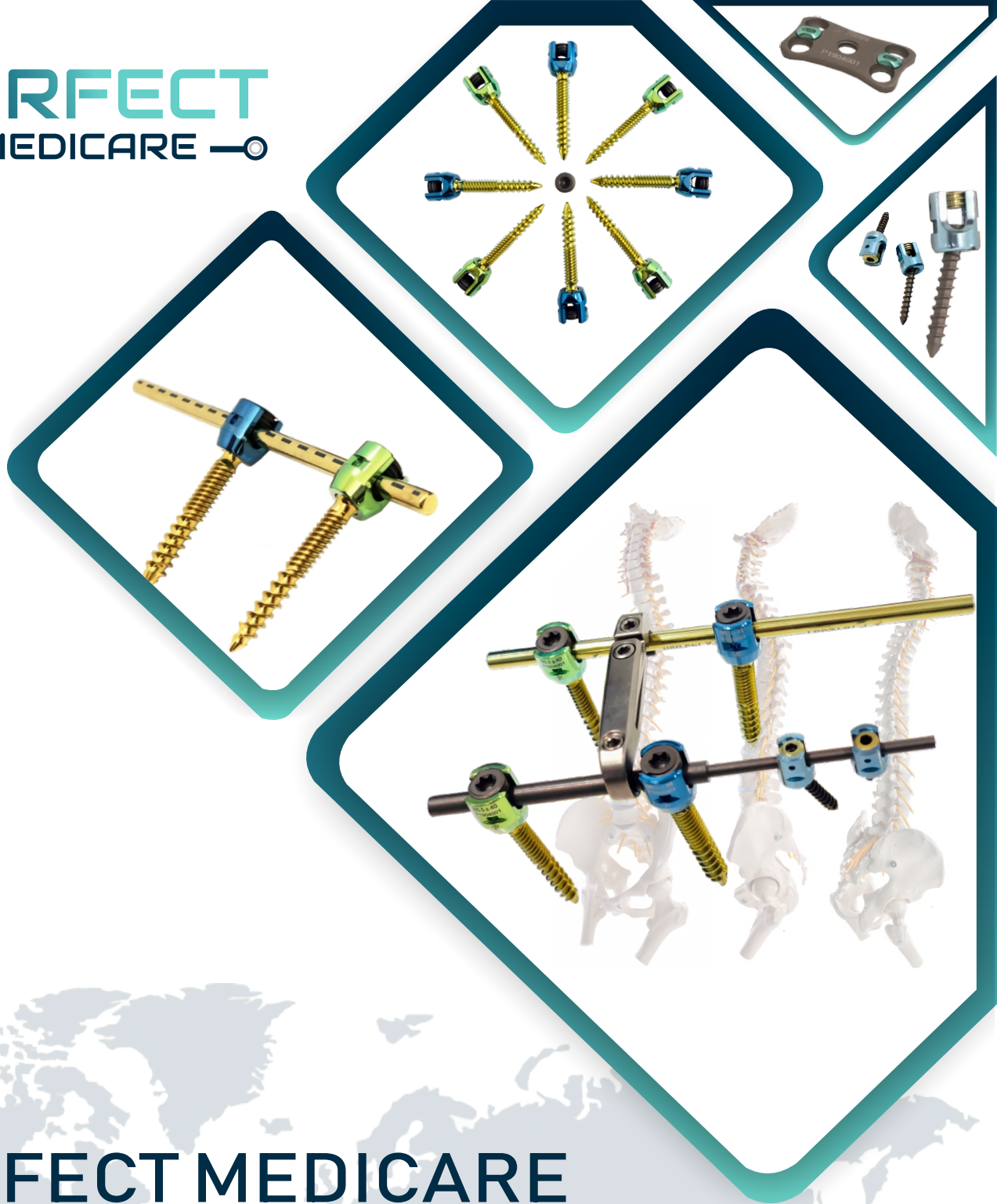


FULLY ATOMISATION PLANT





PERFECT
— MEDICARE —



PERFECT MEDICARE

Manufacturer Of Orthopedic Implants & Instruments

Manufacturing Unit:

📍 26, 27, 28, Mahadev Estate, Part-4/A (Part-6)
B/H. Ramol Police Station,
C.T.M. - Ramol Road, Ahmedabad-382449.
Gujarat - India.

✉ email : info@perfectmedicares.com

🌐 website : www.perfectmedicares.com

Dealer

